

FCIS Application Remote Deployment
Oracle FLEXCUBE Investor Servicing
Release 14.0.0.0.0
[May] [2018]



Table of Contents

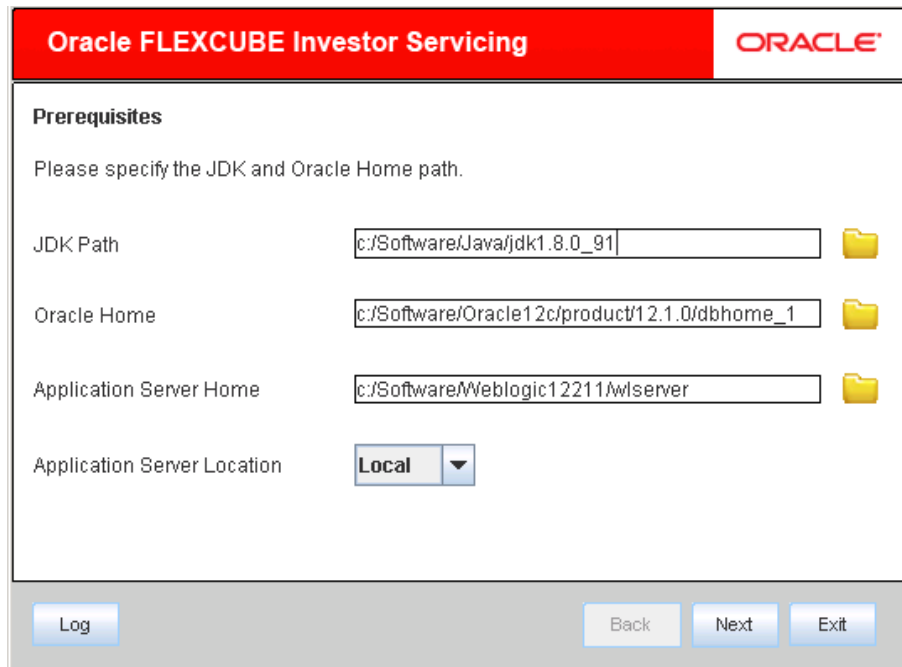
- 1. ORACLE FLEXCUBE INVESTOR SERVICING SOLUTIONS 1-1
 - 1.1 FCIS APPLICATION REMOTE DEPLOYMENT 1-1

1. Oracle FLEXCUBE Investor Servicing Solutions

This document describes step to install FCIS application into weblogic server in remote deployment option

1.1 FCIS Application Remote Deployment

1. Launch Oracle FLEXCUBE Investor Servicing Installer.



The screenshot shows the 'Oracle FLEXCUBE Investor Servicing' installer window. The title bar is red with the Oracle logo. Below the title bar, the text 'Prerequisites' is displayed. A message reads: 'Please specify the JDK and Oracle Home path.' There are four input fields: 'JDK Path' with the value 'c:/Software/Java/jdk1.8.0_91', 'Oracle Home' with 'c:/Software/Oracle12c/product/12.1.0/dbhome_1', 'Application Server Home' with 'c:/Software/Weblogic12211/wlserver', and 'Application Server Location' with a dropdown menu set to 'Local'. At the bottom, there are buttons for 'Log', 'Back', 'Next', and 'Exit'.

Enter the following details

JDK Path

Provide Home folder path of JDK1.8

Oracle Home

Provide home folder path of Oracle Client or Database

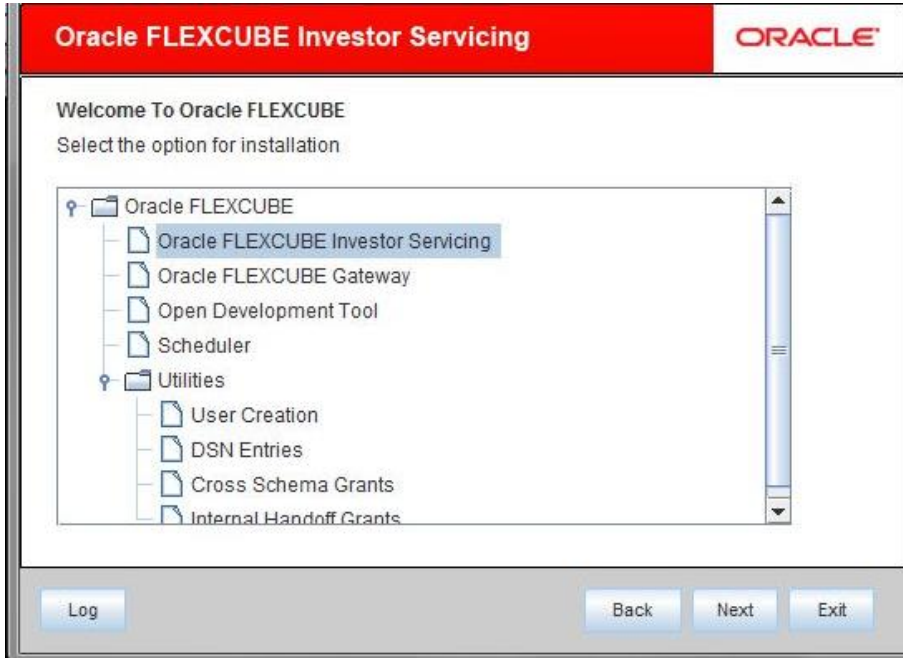
Application Server Home

Provide home folder path of Application Server

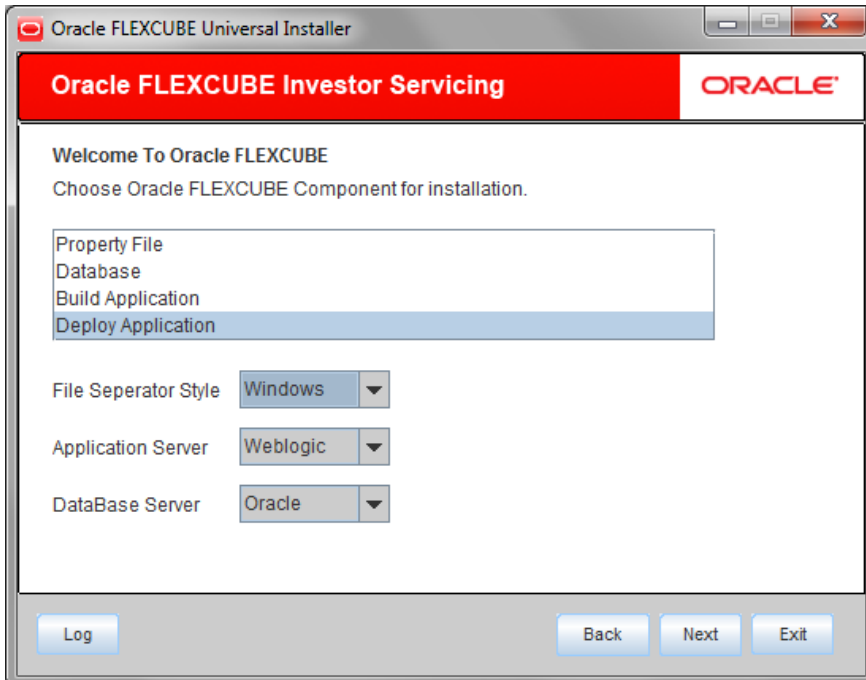
Application Server Location

Select location of the application server as Remote

2. Click on 'Next' and the following screen is displayed:



3. Select 'Oracle FLEXCUBE Investor Servicing'.
4. Click 'Next' and the following screen is displayed:



5. Select 'Deploy Application'.

6. Specify the following details:

Release

Select the release in which you are installing the FCIS application. Select the appropriate one from the adjoining drop-down list.

Server's Operating System

Select the server's operating system in which you are installing the FCIS application. Select the appropriate one from the adjoining drop-down list.

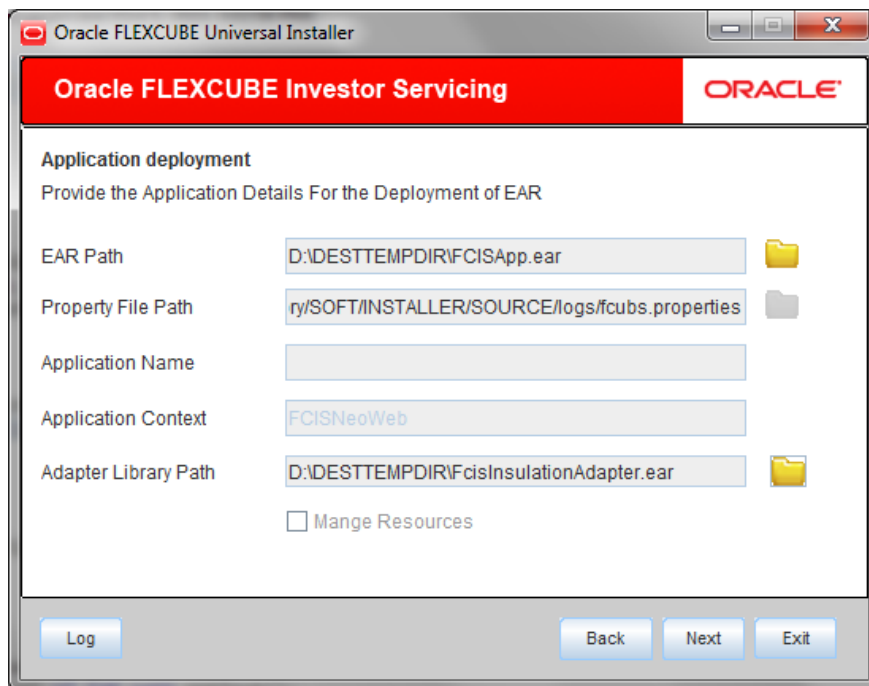
Application Server

Select 'Weblogic' from the adjoining drop down list.

Database Server

Select the database server in which you are installing the FCIS application. Select the appropriate one from the adjoining drop-down list.


7. Once you have specified all the details , click 'Next' and the following screen is displayed:



8. Specify the following details:

EAR Path

Specify the location of FCIS ear file. You can use the directory button to browse and select the directory.

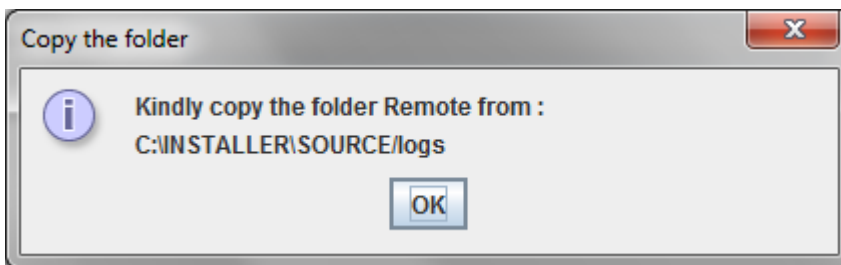
 The Application EAR path cannot be copied and pasted on to the text box, thereby demanding the use of the browse button to the select the EAR.

Property File Path

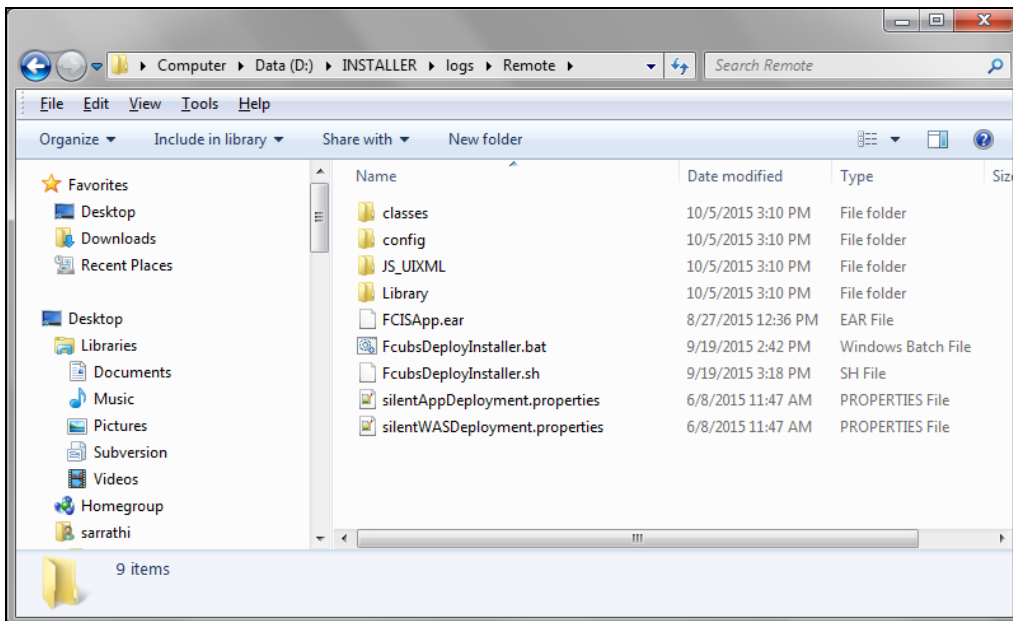
If the property file is internal to the application EAR, it gets displayed here on selection of EAR path. If the property file is external, specify the location. You can use the directory button to browser and select the directory.

Below three fields are disabled in remote application server option.

- Application Name
 - Application Context
 - Manage Resources
9. Click 'Next' and wait few seconds for installer to prepare the files for remote deployment. The following message is displayed once the preparation is successful.



10. Please copy the files from the location (Remote folder) shown in message box and place in the machine where the target application server is installed. The content of the remote folder looks as below



Launch the Deployer by double clicking FcubsDeployInstaller.bat (windows OS) or FcubsDeployInstaller.sh (linux OS)

```
C:\Windows\system32\cmd.exe
Flex Cube UBS : Release 12.2.0.0.0 - Production on 19:15:17.74 Tue 09/27/2016
Copyright (c) 2016, Oracle Financial Services Software Ltd. All rights reserved.

Checking the write permissions.....
checking whether Installer is running.....
Creating a new flag file.....
sucessfully created the flag File.

Initializing the errorLevel to 0

Checking Java Home.....
Please input Java path [Example: c:\Software\Java\jdk1.8.0_91
#####JAVAHOME NOT DEFINED#####
Enter JAVA HOME Directory:c:\Software\Java\jdk1.8.0_91
JAVA_HOME has been set
Initializing the errorLevel to 0

Checking Java Home.....
Java Home Path has been set sucessfully.
```

11. Enter JAVA Home, Oracle Home, and Application Server Home and Server location when prompted. The installer will get launched and it will show below screen.

Oracle FLEXCUBE Investor Servicing ORACLE

Prerequisites

Please specify the JDK and Oracle Home path.

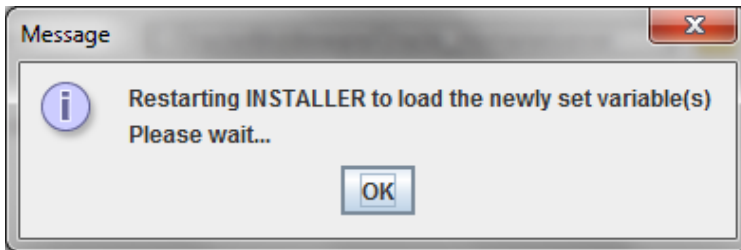
JDK Path

Oracle Home

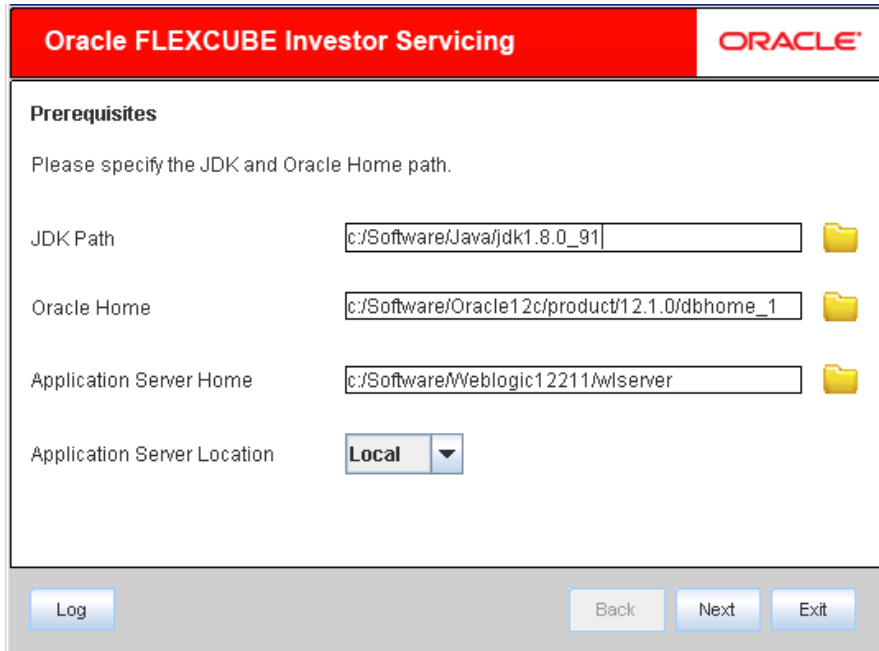
Application Server Home

Application Server Location

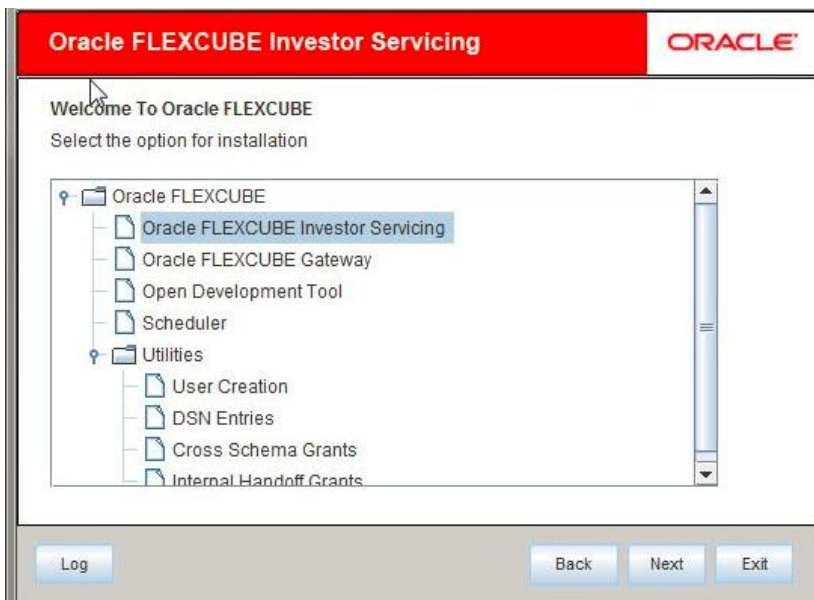
12. Click 'Next'



13. The above message will be displayed. Click Ok to restart the installer.



14. Click Next



From this step onwards refer appropriate deployment document as per application server and FCIS component

For example:

If your appserver is webpsphere and application is Gateway then refer the document "[Gateway Application Deployment Websphere](#)"

Note: EAR file will be under Remote directory itself, this should be selected for deployment.



FCIS Application Remote Deployment
[May] [2018]
Version 14.0.0.0.0

Oracle Financial Services Software Limited
Oracle Park
Off Western Express Highway
Goregaon (East)
Mumbai, Maharashtra 400 063
India

Worldwide Inquiries:
Phone: +91 22 6718 3000
Fax: +91 22 6718 3001
www.oracle.com/financialservices/

Copyright © [2007], [2018], Oracle and/or its affiliates. All rights reserved.

Oracle and Java are registered trademarks of Oracle and/or its affiliates. Other names may be trademarks of their respective owners.

U.S. GOVERNMENT END USERS: Oracle programs, including any operating system, integrated software, any programs installed on the hardware, and/or documentation, delivered to U.S. Government end users are "commercial computer software" pursuant to the applicable Federal Acquisition Regulation and agency-specific supplemental regulations. As such, use, duplication, disclosure, modification, and adaptation of the programs, including any operating system, integrated software, any programs installed on the hardware, and/or documentation, shall be subject to license terms and license restrictions applicable to the programs. No other rights are granted to the U.S. Government.

This software or hardware is developed for general use in a variety of information management applications. It is not developed or intended for use in any inherently dangerous applications, including applications that may create a risk of personal injury. If you use this software or hardware in dangerous applications, then you shall be responsible to take all appropriate failsafe, backup, redundancy, and other measures to ensure its safe use. Oracle Corporation and its affiliates disclaim any liability for any damages caused by use of this software or hardware in dangerous applications.

This software and related documentation are provided under a license agreement containing restrictions on use and disclosure and are protected by intellectual property laws. Except as expressly permitted in your license agreement or allowed by law, you may not use, copy, reproduce, translate, broadcast, modify, license, transmit, distribute, exhibit, perform, publish or display any part, in any form, or by any means. Reverse engineering, disassembly, or decompilation of this software, unless required by law for interoperability, is prohibited.

The information contained herein is subject to change without notice and is not warranted to be error-free. If you find any errors, please report them to us in writing.

This software or hardware and documentation may provide access to or information on content, products and services from third parties. Oracle Corporation and its affiliates are not responsible for and expressly disclaim all warranties of any kind with respect to third-party content, products, and services. Oracle Corporation and its affiliates will not be responsible for any loss, costs, or damages incurred due to your access to or use of third-party content, products, or services.